

Year 8 ICT 100% Computer Aided Design

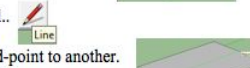
1. Click the rectangle icon and draw a rectangle.



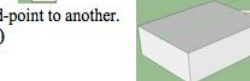
2. Click on the push/pull tool and drag the rectangle up.



3. Click the pencil 'line' tool..



4. Draw a line from one mid-point to another. (Look for the blue dots!)



5. Click on the move icon.



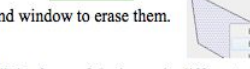
6. Drag the mid-point line up.



7. Use the rectangle tool to draw a door and window.



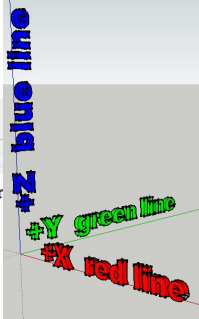
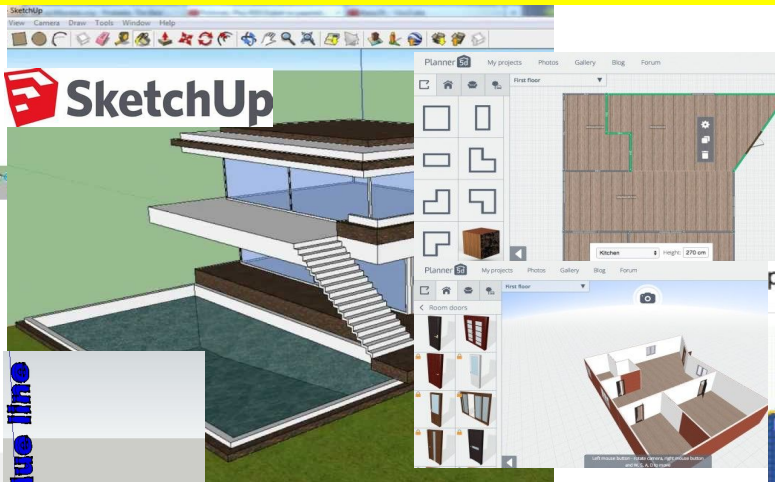
8. Right-click on the door and window to erase them.



9. Use the paint bucket to fill the faces of the house in different colour textures.



10. Use the orbit, pan and zoom tools to change your viewpoint on the house.



- 3D Shapes
- 2D Shapes
- Transform
- Set Cps
- Math
- Logic
- Loops
- Text
- Variables
- Modules

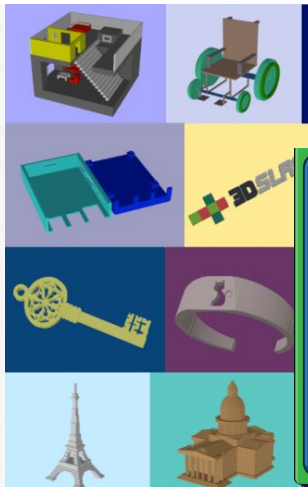
Library of Available Blocks

Results! 3D Models shown here

YOUR Blocks go here



- Endpoint
- Midpoint
- On Edge
- On Face
- Intersection



BlocksCAD

